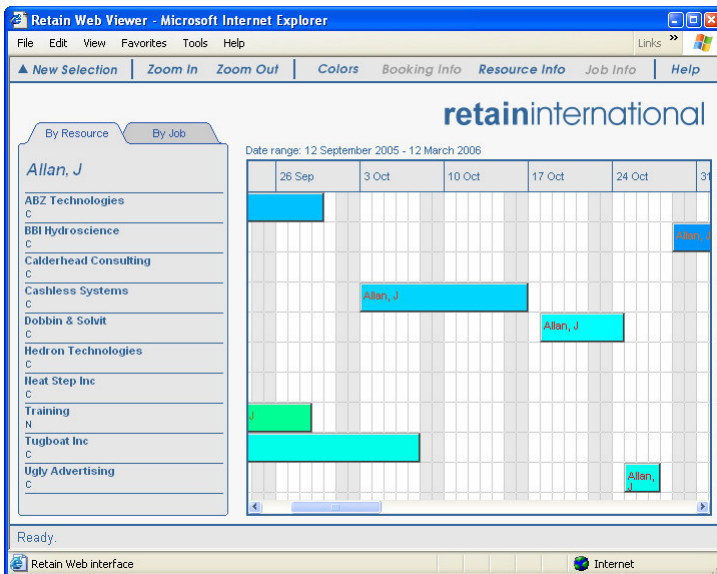


Retain Resource Planning System

Web Viewer

Retain Web Viewer gives users the ability to view their schedules through a web browser. Information is presented in a familiar graphical format similar to the wallchart view in Retain Resource Planning System.

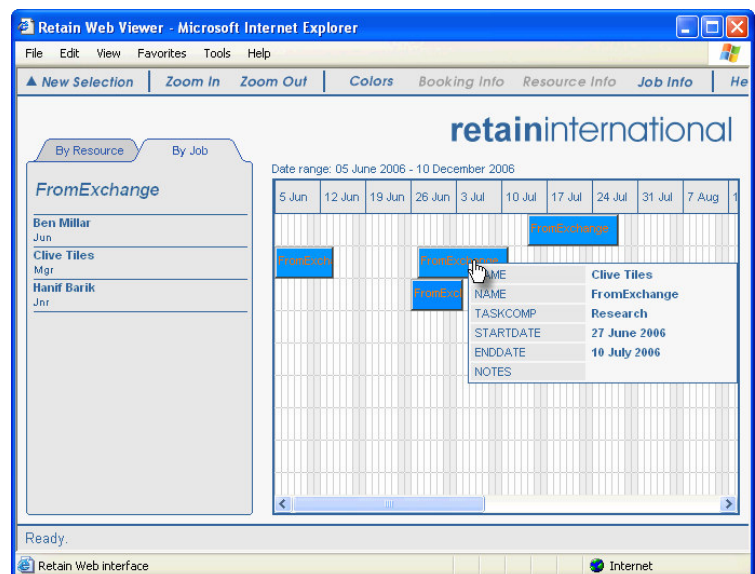
The Web Viewer connects directly to your Retain database, extracts the necessary data and then visually displays the schedule for the resource, by groups or on a per job basis.



Key features of the software are:

- ◆ Individuals can view their schedule via the Internet using most web browsers.
- ◆ View schedules by groups e.g. by team, by office, by staff level...
- ◆ Find colleagues on the same job as yourself via the 'By Job' view.
- ◆ Booking bar pop-up tips appear when the mouse cursor pauses over a booking. Booking tips show more information about a booking. Customise what information is displayed in booking tips.

- ◆ Tailor the information displayed on screen:
 - the additional field that appears under the job name in the left hand margin.
 - the field displayed in the booking bars.
 - the colours used in the booking bars.
- ◆ Adjust the currently viewable time interval using the scroll bar or 'Zoom In'/'Zoom Out' buttons.



In order to run Retain Web services you need the following :

- A Web Server (usually IIS).
- A Retain Database running on either SQL Server, Oracle or Retain Planner embedded database.

The Retain Web Viewer is now available with a standalone web server.



retaininternational